



Histone H1 (Mono Methyl Lys25) Polyclonal Antibody

Catalog No	YP-Ab-01131
Isotype	IgG
Reactivity	Human;Mouse;Rat
Applications	WB
Gene Name	HIST1H1A/HIST1H1C/HIST1H1D/HIST1H1E
Protein Name	Histone H1.1/Histone H1.2/Histone H1.3/Histone H1.4
Immunogen	Synthetic Peptide of Histone H1 (Mono Methyl Lys25)
Specificity	The antibody detects endogenous Histone H1 (Mono Methyl Lys25) protein.
Formulation	PBS, pH 7.4, containing 0.5%BSA, 0.02% sodium azide as Preservative and 50% Glycerol.
Source	Polyclonal, Mouse
Purification	The antibody was affinity-purified from mouse ascites by affinity-chromatography using specific immunogen.
Dilution	WB: 1:500-1000
Concentration	1 mg/ml
Purity	≥90%
Storage Stability	-20°C/1 year
Synonyms	H1K25ME1; HIST1H1A; H1F1; Histone H1.1; Histone H1a; HIST1H1C; H1F2; Histone H1.2; Histone H1c; Histone H1d; Histone H1s-1; HIST1H1D; H1F3; Histone H1.3; Histone H1c; Histone H1s-2; HIST1H1E; H1F4; Histone H1.4; Histone H1b; Histone H1s-4
Observed Band	17-25kD
Cell Pathway	Nucleus . Chromosome . Mainly localizes in euchromatin.
Tissue Specificity	Placenta,
Function	function:Histones H1 are necessary for the condensation of nucleosome chains into higher order structures.,similarity:Belongs to the histone H1/H5 family.,
Background	Histones are basic nuclear proteins responsible for nucleosome structure of the chromosomal fiber in eukaryotes. Two molecules of each of the four core histones (H2A, H2B, H3, and H4) form an octamer, around which approximately 146 bp of DNA is wrapped in repeating units, called nucleosomes. The linker histone, H1, interacts with linker DNA between nucleosomes and functions in the compaction of chromatin into higher order structures. This gene is intronless and encodes a replication-dependent histone that is a member of the histone H1 family. Transcripts from this gene lack polyA tails but instead contain a palindromic termination element. This gene is found in the large histone gene cluster on



chromosome 6. [provided by RefSeq, Aug 2015],

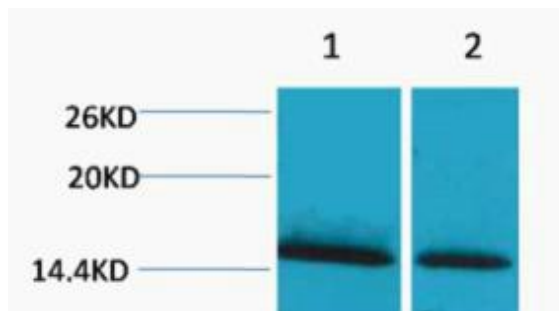
matters needing attention

Avoid repeated freezing and thawing!

Usage suggestions

This product can be used in immunological reaction related experiments. For more information, please consult technical personnel.

Products Images



Western blot analysis of 1) Hela, 2) 3T3, diluted at 1:2000. Secondary antibody(catalog#:RS0002) was diluted at 1:20000